

# Waste Water Treatment

## Sludge Thickeners ISP



40



### Description ▼

Sludge Thickeners ISP are used to thicken sludge from settlement tanks in both municipal and industrial purification plants. The thickener allows to increase the concentration of sludge due to the slow movement of the arms and vertical pickets. This also enables the liberation of gas bubbles and the aggregation of flakes of sludge.

The system is installed inside a circular tank with walkway made of concrete, and it is mainly composed of a central drive shaft made of steel, complete with flanges for the connection to the movable trellis and to the scraper blades of the sludge drain well. Movable trellis are equipped with vertical pickets and bottom scraper blades. The central cylinder, which is anchored to the concrete walkway, is used for the sewage intake.

The thickener is operated by a drive unit composed of an epicycloid oil bath gearbox. It is coupled to the drive shaft by means of a flange or, if the tank diameter is more than 12 m, by means of a central bearing.

### Application ▼



### Benefits ▼

- ✓ Quick installation;
- ✓ High efficiency in water content reduction;
- ✓ Easy installation even into existing tanks.



[www.savi-water.com](http://www.savi-water.com)  
[www.wamgroup.com](http://www.wamgroup.com)

# Waste Water Treatment

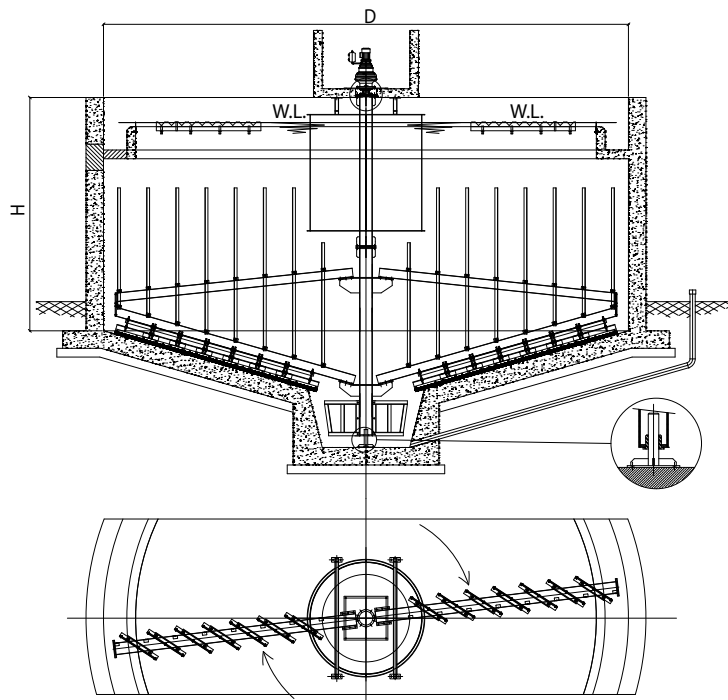
## Sludge Thickeners ISP



### Technical Features / Performance ▼

- ▶ Available for tanks up to 18m in diameter
- ▶ Central bearing for units larger than 12m in diameter
- ▶ Carbon steel hot dip galvanized / 304 L / 316 L SS
- ▶ Control panel (option)
- ▶ Electric torque limit switch (option)
- ▶ Scum removal device (option)
- ▶ Walkway made from carbon steel hot dip galvanized / 304 L / 316 L SS (option)

### Overall Dimensions ▼



DS.ISP.EL/December 2017/000 Rights reserved to modify technical specifications.

ISP SLUDGE THICKENER

MODEL	TANK DIAMETER D m	TANK HEIGHT H m	INSTALLED POWER kW
ISP 4	4.00	as civil works	0.18
ISP 5	5.00	as civil works	0.18
ISP 6	6.00	as civil works	0.25
ISP 7	7.00	as civil works	0.25
ISP 8	8.00	as civil works	0.25
ISP 9	9.00	as civil works	0.25
ISP 10	10.00	as civil works	0.25
ISP 11	11.00	as civil works	0.25
ISP 12	12.00	as civil works	0.25
ISP 14	14.00	as civil works	0.37
ISP 16	16.00	as civil works	0.37
ISP 18	18.00	as civil works	0.37



www.savi-water.com  
www.wamgroup.com