

# Waste Water Treatment

## FIBC Dischargers SBB-810

47



### Description ▼

The SBB-810 FIBC Discharger consists of a stainless steel frame complete with a material discharge hopper and an upper mobile cross bar for lifting the filled up bag by forklift truck into the Discharger.

### Function ▼

The SBB-810 is a modular system for discharging Flexible Intermediate Bulk Containers (Big Bags) in different configurations depending on the application.

Easy introduction of the FIBC into the support frame and dust-free discharging along with a variety of options make the SBB-810 extremely user-friendly.

The four loops of the FIBC are attached to the hooks of the detached cross bar that has previously been laid on top of the FIBC. The cross bar with the attached FIBC is then picked up by a forklift truck and introduced into the frame of the SBB Discharger. Once the FIBC has settled on the rubber seal of the discharge hopper the outlet closing rope of the FIBC can be pulled open through the inspection hatch of the discharge hopper.



### Application ▼

SBB-810 FIBC Dischargers are used to transfer materials contained in FIBCs to a dosing station.

### Benefits ▼

- ✓ **Modular design;**
- ✓ **Compact shipping dimensions;**
- ✓ **Easy to install;**
- ✓ **Complete dust-free discharging from bag corners even with compressed powders.**

# Waste Water Treatment

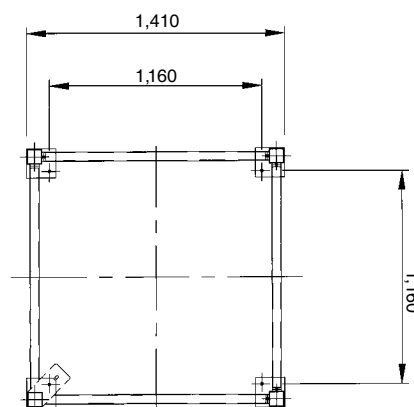
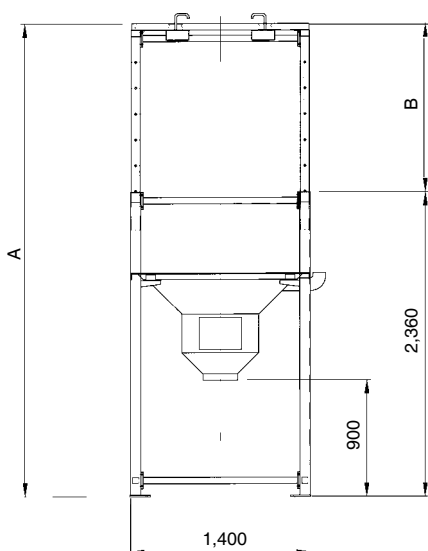
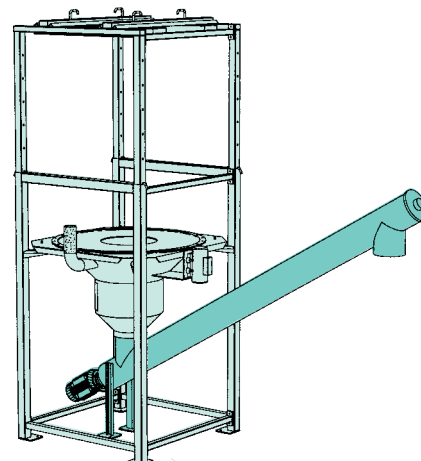
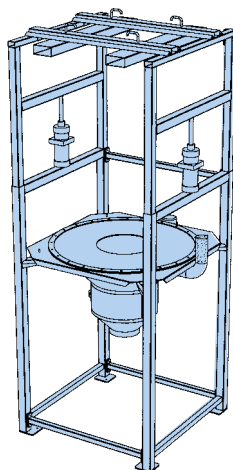
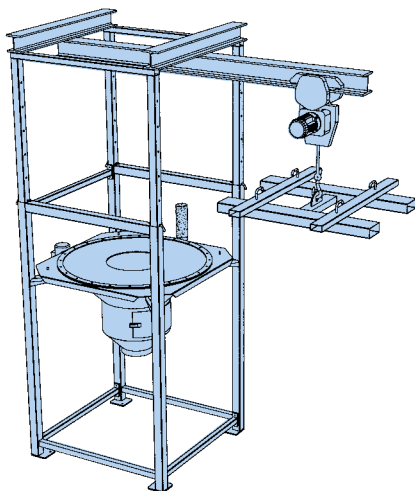
## FIBC Dischargers SBB-810



### Technical Features / Performance ▼

- ▶ Construction material: Carbon steel / Stainless steel
- ▶ Vibrating outlet cone fitted with outlet opening hatchway

### Overall Dimensions ▼



TYPE	A	B	C	Max. Bulk Bag Dimensions		
				L	W	M (max.)
SBB01.1.X	3,668	1,884	1,308	1,000	1,000	1,800
SBB01.2.X	4,108	2,234	1,658	1,000	1,000	2,200

Dimensions in mm

*This datasheet does not show the complete range but only the models most suitable for the application.*